

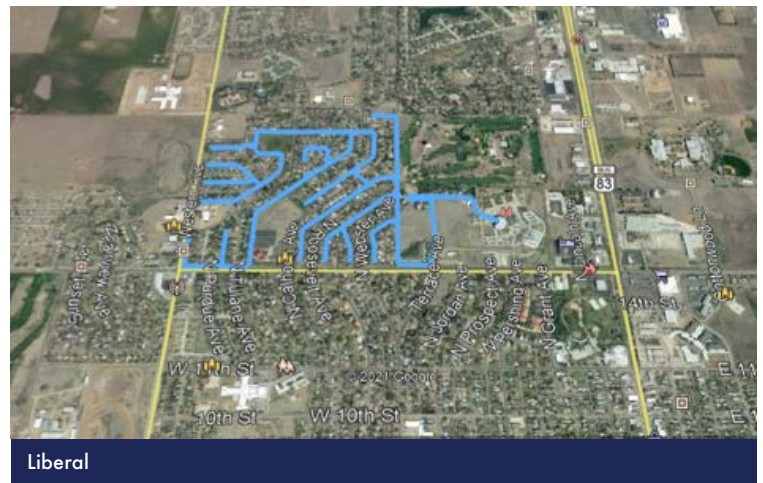
Total Project Investment:
\$1,189,504

Award Amount:
\$594,752

In Partnership With:
EPIC TOUCH

ABOUT THE NEED

The project area is in the City of Liberal in Seward County, which is both economically distressed and underserved. Since 2018, EPIC TOUCH has been working to combat these concerns by laying a fiber network in the city that currently serves more than 125 homes and 50 businesses. This project will expand on this existing network, creating a new service area of residential and commercial locations including more than 350 homes, a regional healthcare facility, long-term care facilities, childcare centers, and several other medical offices and businesses. Community surveys provided compelling anecdotal evidence that community members want and need better broadband service. The most common concerns on these surveys were frequent outages, slow speeds, and poor reliability with current providers. EPIC TOUCH intends to rectify these issues with a Fiber-to-the-Premises build, ensuring that the residents and businesses in Liberal have consistent, robust access they need to thrive. This investment will provide broadband access to support the families, community anchors and businesses in Liberal, a rural Kansas town where access to education, specialized medical care, and small business growth is reliant on a consistent internet connection.



ABOUT EPIC TOUCH

EPIC TOUCH is a family business, which has been providing communication services to Elkhart Telephone Company customers since 1956 and Campti-Pleasant Hill Telephone customers since 1933. Beginning as small, independent telephone companies, both locations have advanced into proven broadband providers. EPIC TOUCH continues to be at the forefront of bringing the latest communications services to its customers in Elkhart and Liberal, Kansas, and in Natchitoches, Sabine, DeSoto, and Red River Parishes in Louisiana. Focusing on leading-edge technology and exceptional customer service with the EPIC TOUCH.

The Kansas Office of Broadband Development was established in 2020 to help ensure that all Kansans have the opportunity to live, work, learn and compete in a global economy by improving universal access to quality, affordable and reliable broadband. The Office is housed within the Community Development Division of the Kansas Department of Commerce. As the state's lead economic development agency, Commerce strives to empower individuals, businesses and communities to achieve prosperity in Kansas.